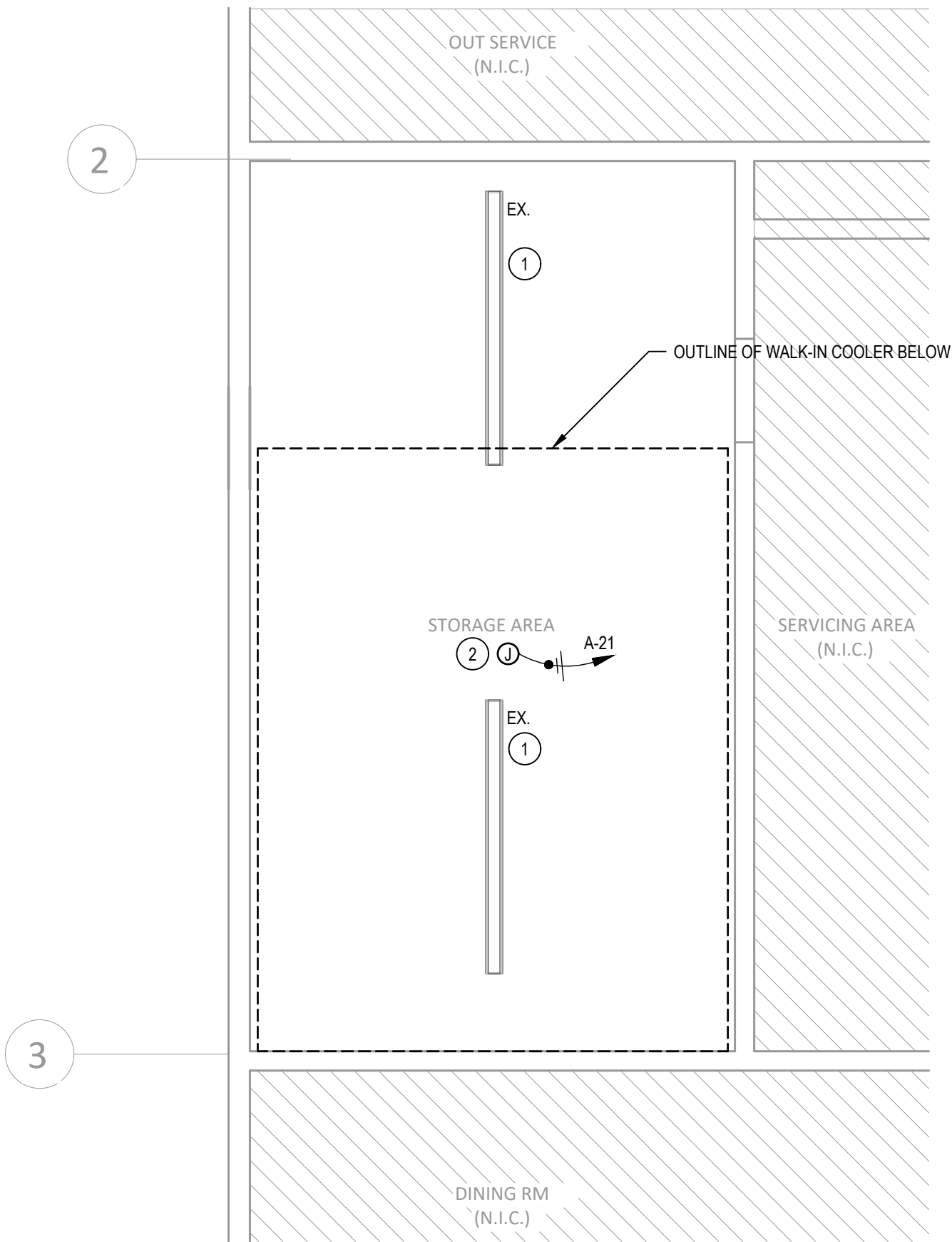
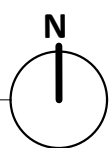
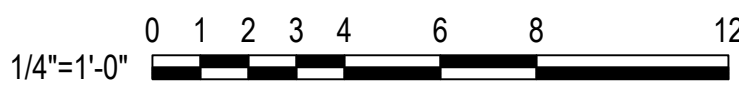
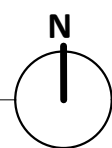


1 ENLARGED ROOF PLAN  
1/4" = 1'-0"



1 ENLARGED LIGHTING PLAN  
1/4" = 1'-0"



GENERAL NOTES

1. REFER TO SHEET E0.2 FOR GENERAL NOTES.

KEYNOTES

- 1 EXISTING LIGHTING AND BRANCH CIRCUIT ABOVE WALK-IN COOLER SHALL BE PROTECTED IN PLACE DURING CONSTRUCTION.
- 2 PROVIDE AND INSTALL JUNCTION BOX FOR POWER CONNECTION TO LIGHTING FOR NEW FREEZER. COORDINATE UNIT FEED LOCATION WITH MANUFACTURER SHOP DRAWINGS. INTERCEPT AND EXTEND CONDUITS AND CONDUCTORS AS NEEDED TO TIE IN NEW FREEZER LIGHTING TO BRANCH CIRCUIT SERVING EXISTING LIGHTING IN THIS SPACE.
- 3 PROVIDE AND INSTALL 60AS/40AF/3P FUSED DISCONNECT SWITCH FOR POWER CONNECTION TO NEW FREEZER EQUIPMENT. CONTRACTOR TO VERIFY CONDENSING UNIT MCA / FLA WITH MANUFACTURER SHOP DRAWINGS PRIOR TO INSTALLING. COORDINATE FINAL DISCONNECT, FUSE, AND FEEDER SIZE REQUIREMENTS WITH MANUFACTURER SHOP DRAWINGS.

ENLARGED PLANS

SAN DIEGO UNIFIED SCHOOL DISTRICT  
KITCHEN MODIFICATIONS GROUP 6  
**CLAIREMONT HIGH SCHOOL**  
4150 LITE DR. SAN DIEGO, CA 92117  
DSA SUBMITTAL SET

PROJECT NO. SDUF-006

DATE 04/09/2025

REVISIONS  
1 04/23/25

SHEET NO.

E4.1

**COFFMAN ENGINEERS**  
1455 Frazee Rd., Suite 600  
San Diego, CA 92108  
ph 619.232.4673  
www.coffman.com



**obr**  
ARCHITECTURAL ART  
ARCHITECT/CONSULTANT



BOARD OF EDUCATION

obr/ARCHITECTURE  
2419 EL CAJON BLVD, SAN DIEGO, CA 92104